

Partnership Board Annual Report 2011

This report is questions asked by Valuing People about:

- Our Partnership Board
- learning disability services
- other services that people with learning disabilities use in our area

We will take our report to the Brighton & Hove Joint Commissioning Board

We will send our report to the Public Health Observatory:
partnershipboardreport@ihal.org.uk

The Public Health Observatory will put all the Partnership Board reports on their website at www.ihal.org.uk

We will also send our report to the Health and Social Care Partnership south east:
Dani.Cohen@hscpartnership.org.uk

The Health and Social Care Partnership have also given us a spread sheet of numbers to fill in.

The Health and Social Care Partnership south east will use the words and numbers to compare what happened across the south east in 2010-11.

We need to send our report to them all by 29th July 2011

Some of the numbers in this report are still being checked by the council so the final numbers, in the council's report to government, might be a bit different than we have reported here.

Partnership Board Annual Report 2011



Name of Partnership Board

Brighton & Hove Learning Disability Partnership Board



Web address for Partnership Board

www.brightpart.org



Name of Local Authority

Brighton & Hove City Council



Name of Primary Care Trust

Brighton & Hove City Teaching PCT



Partnership Board lead officer

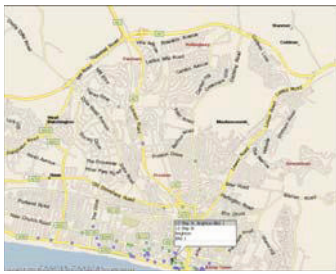
Name: Diana Bernhardt



Email: diana.bernhardt@brighton-hove.gov.uk



Phone: 01273 292363



Local picture

Number of adults with a learning disability who are known to the Local Authority

	Number
Age 18 to 64	722
Age 65+	76
Male	450
Female	348



Number of young people (aged 14-18 years) with a learning disability

435 young people in year 9 and up have statements of special educational needs

What is the local budget for services for adults with a learning disability?

	2010/11	2011/12
Social care		
Health care	£780,000	£ 780,000
Joint	£33million	£34 million
Total	£33,780,000	£34,780,000



The Bigger Picture

The Joint Strategic Needs Analysis (JSNA) is the big collection of information that tells our local council and NHS Trusts what services they need to provide.



These are some of the things our JSNA tells us:

The important things to make the most of money for services for people with learning disabilities are:



- Make a new plan for learning disability services particularly for housing that involves people with learning disabilities and family carers
- Set up systems to collect and update information on what services people need particularly for people cared for by their families
- Provide more information on what is needed locally to support service providers to change services to better meet local need.
- Make sure people are helped to be as independent as possible including helping people to move on
- Make sure important information is easy to understand
- Use less money for residential care and more money for other types of services
- Check that we are not paying more for services than we should cost
- Meet gaps in services for people with challenging behaviour and complex needs, support for people moving on and people with mild learning disabilities with additional needs.

The top 3 important things that information from our JSNA is telling us in relation to people with learning disabilities are:



1. Develop local housing plan and improve pathways for move on from residential care
2. Set up system to collect needs information and improve forward planning for young people coming through transitions and people cared for by their families
3. Continue to embed improvements in access to healthcare

Successes in 2010-11:

Challenging behaviour

- Setting up services for people with challenging behaviour and complex needs
- Developing quality monitoring tool to monitor services for people with challenging behaviour



Improving information on what people need

- Detailed assessment on needs of people with LD (JSNA)
- Needs information on Autism (JSNA) and draft strategy developed

Criminal justice system

- Introduction of tools to identify people with learning disabilities who are arrested
- Developing pathways for offenders
- Awareness raising with people working in the Criminal Justice System and starting to develop a local plan



Thumbs Up Campaign

- 64 organisations and businesses in Brighton & Hove have signed up so far to promise to provide excellent customer service to all customers, especially those with learning disabilities. The Thumbs Up Campaign is now up and running in Mid Sussex and Countryliner buses have taken the Thumbs Up pledge.
www.brightpart.org/thumbsup.php

Tackling Hate Incidents & Hate Crime

- Progress being made on our [2010 Disability Hate Incidents Strategy](#)

Link Group and Engagement of people with learning disabilities

- We use our Learning Disability Development Fund to engage people with learning disabilities in the Partnership Board. Speak Out, a local voluntary organisation, supports this [engagement work](#). People with learning disabilities who attend the Link Group say the following:
- Advocacy groups (small groups for self-advocates):
 - “friendly, non-judgemental and increase my confidence”
 - “helped me find somewhere new to live”
 - “if you are upset you can tell them, it gives you a chance to speak”
- Big Meeting (advocacy groups send representatives)
 - “I am able to speak out and we help each other out”
 - “We do useful work about things like money, health, day services, seeing friends”
- Link Group (a group of people with learning disabilities who are members of the Partnership Board and ‘Link’ the Big Meeting to the Partnership Board)

- “Council managers hear directly from people’s own experiences”
- “Made ... come out of her shell and get more confidence”
- “Being co-chair [of the Partnership Board] means I tell people who’s going to speak next”
- “If something is bothering you get it off your chest at a Big Meeting and the Partnership Board will sort it out”

Carers’ Engagement, Listening Lunches and get-togethers

- The Carers’ Centre hosts [‘Listening Lunches’](#) which are free, friendly and informal lunches for carers of adults with learning disabilities giving them an opportunity to meet and chat with our two Carer Representatives, to voice views, to have a say in important decisions about services and to hear about what’s happening at the Learning Disability Partnership Board. Carers who attend the ‘Listening Lunches’ say:
 - “I like that the Partnership Board is a cross-section with professionals, people with learning disabilities and carers and everyone has a chance to speak”
 - “it is an opportunity to highlight problems and to give and receive feedback and have a voice”
 - “it is heartening that so many people are trying to make things better for people with learning disabilities”
- Amaze, a voluntary organisation, hosts parents of teens get-togethers where the two Transition Parents’ Representatives meet with other parents to tell them about the Partnership Board and get their views.



Personalisation

Personalisation is about people having choice and control about their personal services.

How many adults with learning disabilities had a personal budget?

2009/10 = 136

2010/11 = 229



Do children's services offer personal budgets?

No

How many young people receive direct payments?

In November of 2010 there were 17 young people aged 14 – 18 receiving direct payments

Successes in 2010-11:

Total Communication

- we formed a total communication forum, held workshops about total communication, launched a total communication charter for services to sign up to, held a total communication event and launched a total communication web page (details are on www.brightpart.org/communicate.php)



Person-Centred Plan feedback

- Service providers who support people to review their person-centred plans send feedback forms to our Person Centred Approaches sub group. We use the feedback to tell us what sorts of things people are wanting or having difficulty with in their person-centred plans. www.brightpart.org/pca.php



Health

In September our Primary Care Trust is completing a check on health services used by people with learning disabilities.

It is called the Big Health Service Check.

People will be able to get a copy of our Big Health Service Check from:



Person = diana.bernhardt@brighton-hove.gov.uk



Web-site = www.brightpart.org

This is what we scored in last year's Big Health Services Check.

RAG rating	Red	Amber	Green
NHS campus closure			√
Addressing health inequalities		√	
Making sure people are safe		√	
Continuing to achieve other Valuing People Now health Commitments		√	

How many adults with learning disabilities got an annual health check?



2009/10 = 376 people had health checks, 41 turned down the offer of a health check, 17 did not show up for a booked health check appointment and 108 did not reply to the invitation to come in for a health check.

2010/11 = not finished counting yet

What are the health needs of people known to services from last year's Big Health Service Check?

People's 2009/10 annual health checks told us that people have problems with ear wax, overweight, eye health and need to see optician, chiropody and foot health, and dietary issues. The 2010/11 information has not been counted yet.

Successes in 2010-11:



The Health Trainers service

- have been working with day services to do sessions on healthy eating and physical activity

Local Enhanced Service

- All our GP practices have now signed up to our Local Enhanced Service for people with learning disabilities.

www.brightpart.org/healthy.php



Housing

The government want people to live in 'settled accommodation' like with their family, in a shared lives home or in supported living.

Hospitals and residential homes are called 'unsettled accommodation'



Do you have a learning disability housing needs analysis that is part of the local authority housing strategy?

NO

Do you have a learning disability housing needs analysis that is part of the local Joint Strategic Needs Assessment (JSNA)?

YES – there is a housing section in our JSNA



The percentage of people with learning disabilities who are known to social care and are living in settled accommodation?

2009/10 = 63%

2010/11 = 60%

Percentage of overall learning disabilities social care money used to pay for residential and nursing home placements:

2009/10 = 60%

2010/11 = 57%

2011/12 (projected) = 57%

How many people (known to health and social care) living outside the local authority area:

Type of accommodation	Numbers	Cost
In residential settings	102	£8,230,000
In nursing home placements	4	£360,000
In supported living	2	£87,000
Other please state (Private Hospital)	13	£2,488,800
Totals		



Number of young people (aged 14-25 years) in out of area specialist education placements

80

Ordinary residence is what it is called when people with learning disabilities want to live permanently away from the area that provides their funding.

Ordinary residence claims total = 20

As a placing authority = 6

As a host authority = 14

What percentage of your market (in terms of expenditure) is provided by?

In house (Local Authority) = 32%

3rd sector / charities (not for profit) and private / independent sector (for profit) = 68%



Do you have a current local housing plan to support more people into supported living?

No – We have developed an ‘Accommodation & Support Plan’ that is being consulted on at the moment

Describe your local housing plans for people with learning disabilities during the next 5 /10 years:

There is a draft ‘Accommodation & Support Plan’ and there is a Shared Lives commissioning plan being developed.



Successes in 2010-11:

‘It’s My Life’ project

- Supported people in care homes to speak up and have effective residents’ meetings (www.brightpart.org Person Centred Approaches web page has details of this LDDF funded project)

The Learning Disability Housing Options Officer

- Supported over 80 people to move or maintain their accommodation in 2010-11. 46 people were supported to move on, including 10 people supported to have a tenancy for the first time



Jobs and What People do During the Day (and in the evening and at weekends)

How many people with learning disabilities known to social services are?



Category	2009/10	2010/11
Working as a paid employee or self-employed (Less than 16 hours per week)	59	63
Working as a paid employee or self-employed (16 hours or more per week)	48	47
Total	107	110
Working as a paid employee or self-employed and in unpaid voluntary work	12	8
In unpaid voluntary work only	104	99

Do you have a local employment plan for people with learning disabilities in line with Valuing Employment Now?

YES

Is there a plan for each young person aged 14-25 to get a job when they leave education?

Education reviews consider future plans but there is no audit to check this happens for every single young person.



Total local authority spend on day services

£ 3,880,000 – for people with learning disabilities

Total local authority spend on supported employment

£240,000 – for all service user groups



Successes in 2010-11:

Day Options

- Local Authority Day Services transformed to Day Options service provided across all five sites and in the community (put in link to announcement on news section of brightpart.org)

Employment Plan

- The Partnership Board agreed an employment plan. www.brightpart.org/workskills.php



Sign-off sheet

Co-chairs of the Partnership Board



1 Betty Vincent

2 R. Jarnett



On behalf of people with learning disabilities

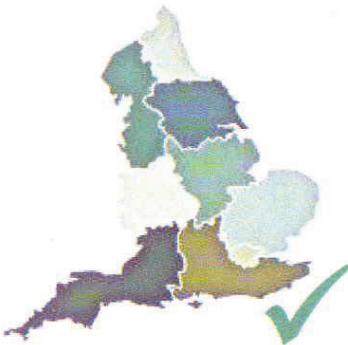
MRS P. BROWN



On behalf of family carers

J.A. Horne

The End



Please send the whole report:

Words and Numbers to

partnershipboardreport@ihal.org.uk

and

Dani.Cohen@hscpartnership.org.uk